

Access Lift - Quick Guide Manual



Standard Operating Procedure

1 Lift Out 	2 Power Up to reach 	3 Raise Up Handrails
4 Pull Out Extension 	5 Power Down 	6 Power Up
7 Lift Up Aluminium Push Extension In 	8 Fold Down Handrails 	9 Lift In to Stow

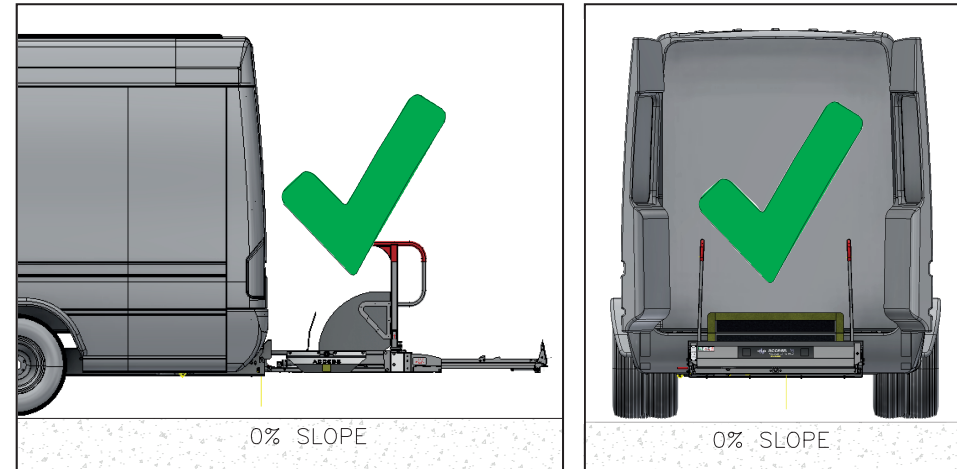
Manual Override Procedure

Lift Out 	Lift Down 	Lift Up
Handrails Up/ Extension Out 	Extension In/ Handrails Down 	Check- Down

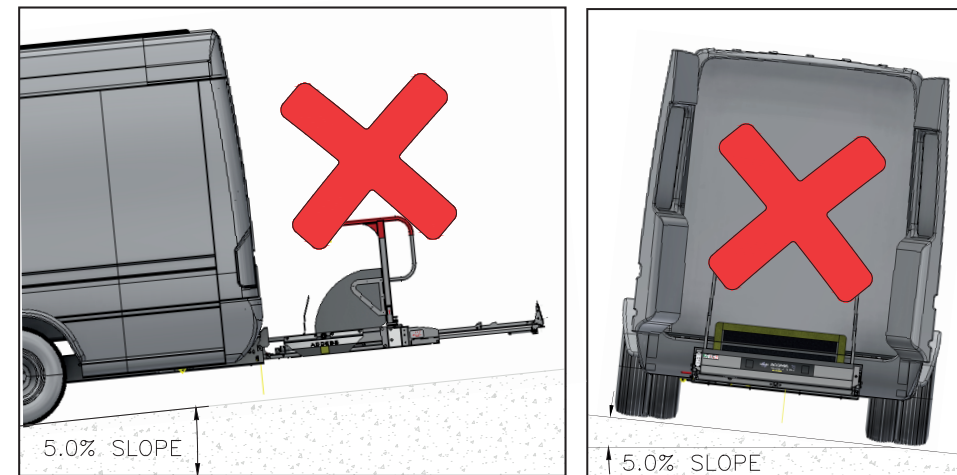
Access Lift - Quick Guide Manual



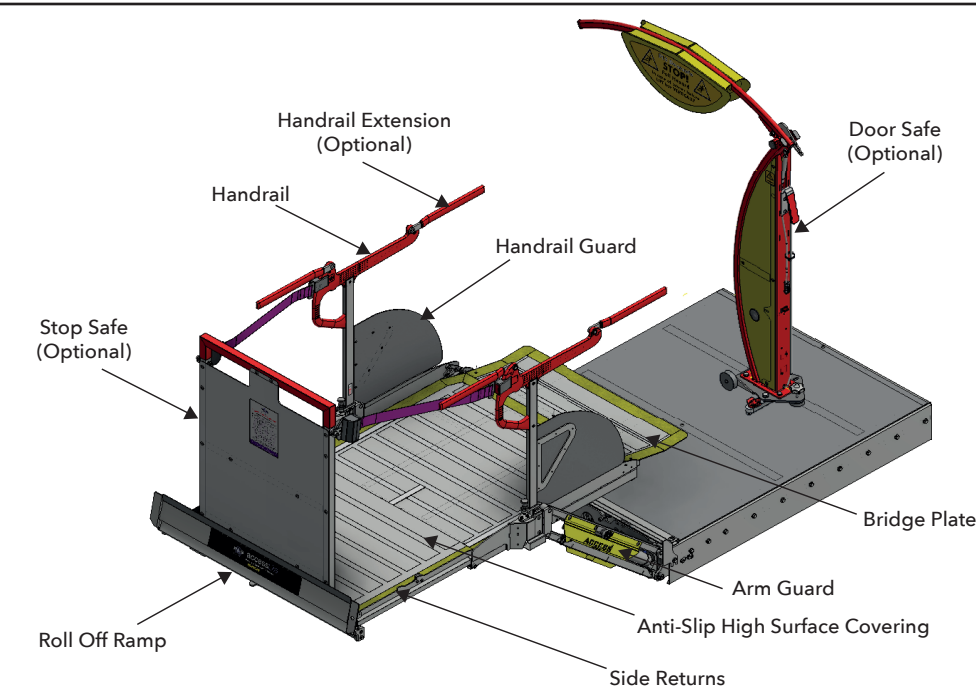
INTENDED USE



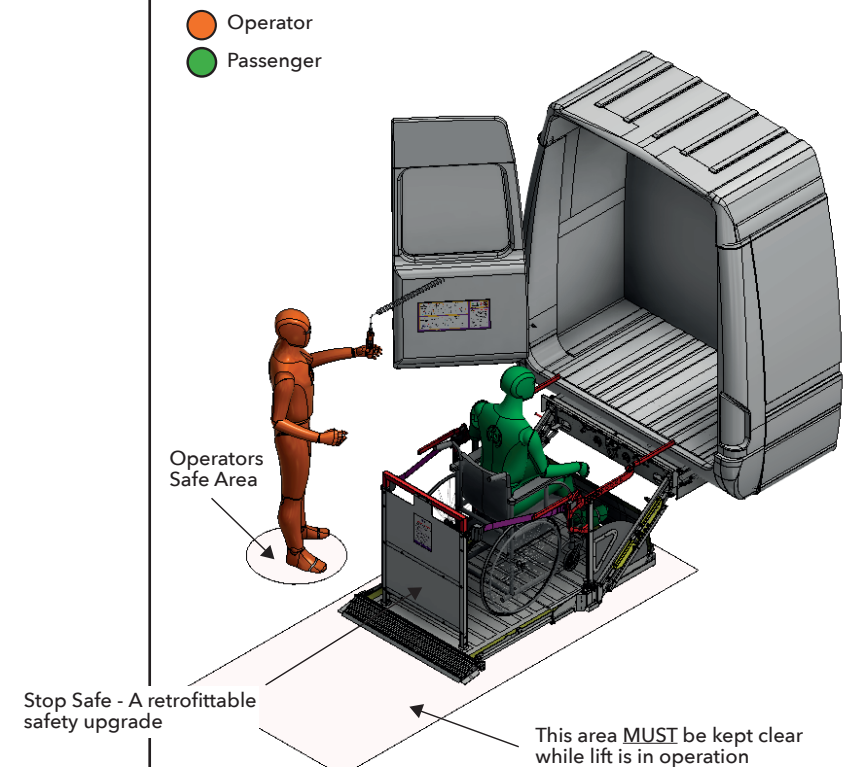
IMPROPER USE



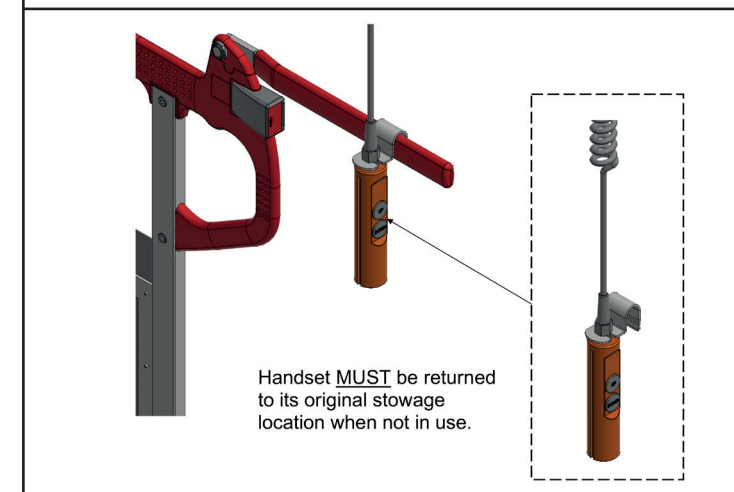
SAFETY DEVICES



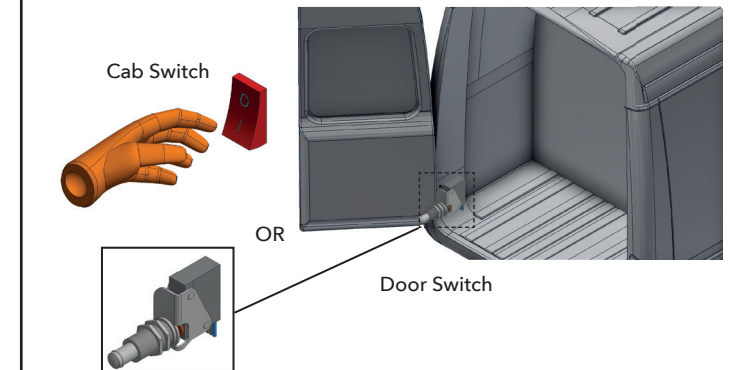
PASSENGER LOADING OPTION 1



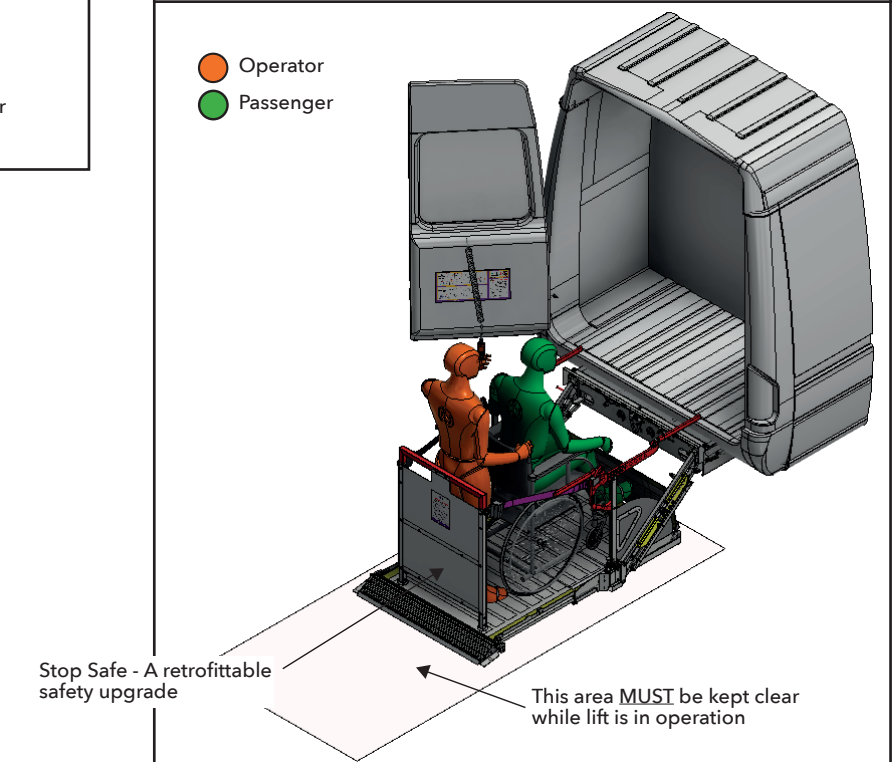
HANDSET CLIP LOCATION



LIFT ISOLATOR



PASSENGER LOADING OPTION 2



- The lift must be operated by fully trained and competent operators.
- Suitable lighting MUST be provided to enable the operator to use the lift safely.
- The emission sound when the lift is in operation should not exceed 80dB.
- It is the operators responsibility to ensure that all safety features fitted are used appropriately and that all safety warning devices, safety labels / information is/are present and correctly displayed at all times.
- The platform lift is a mechanical device controlled by an advanced hydraulic / electrical system that enables passengers to be elevated safely from the ground into the vehicle.